

The background features abstract, overlapping geometric shapes in various shades of green, ranging from light lime to dark forest green. These shapes are primarily located on the left and right sides of the page, framing the central text. The overall aesthetic is clean and modern.

Cherry Hills Village - Planning Division

Permitting and Process Updates

Permit requests can be submitted electronically at cherryhillsvillage.com.

- ▶ Permits that do NOT require plan review (1-3 business days)
- ▶ Permits that DO require plan review (10 business day review cycles)

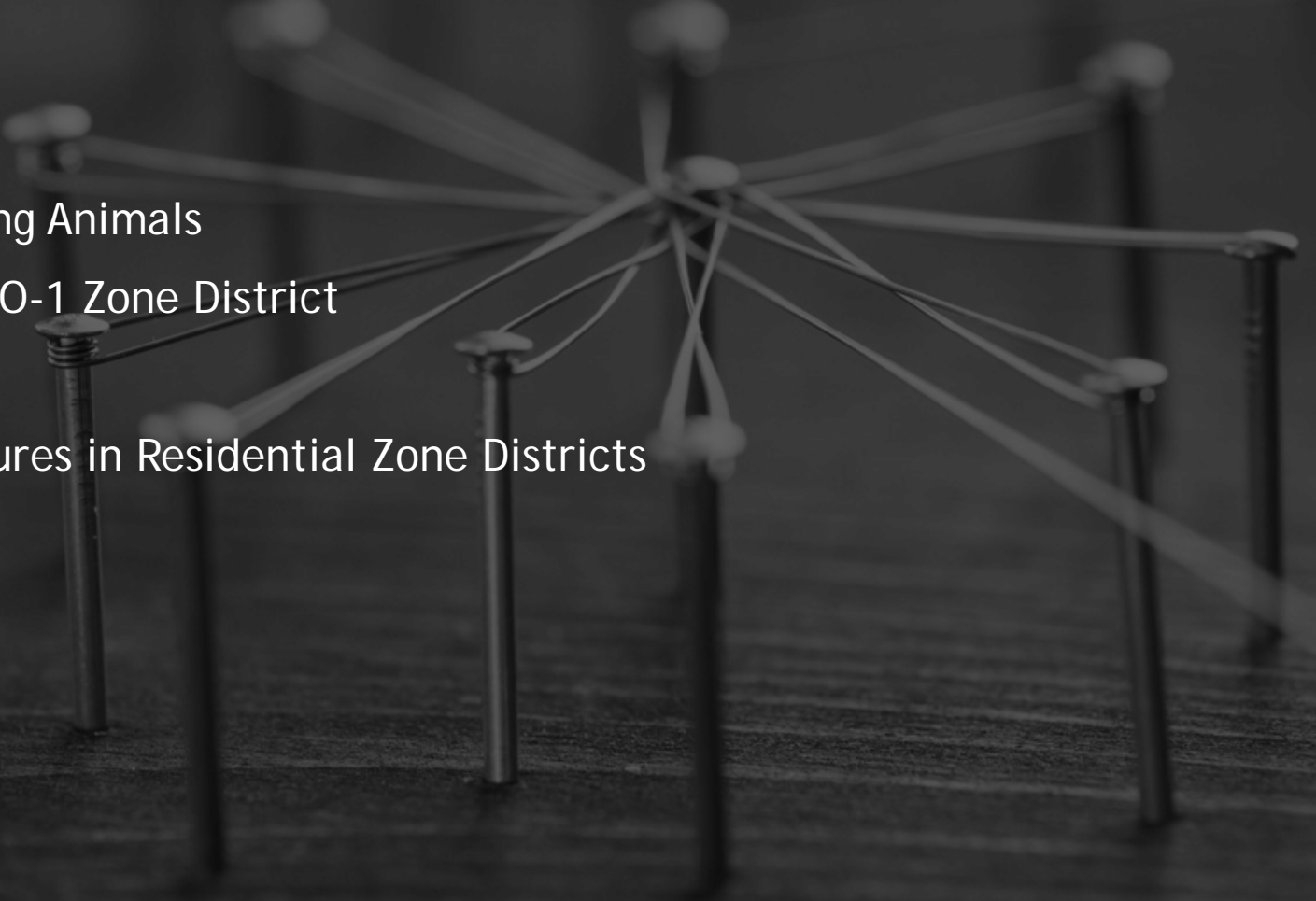
- ▶ The City processed 1061 permit requests in 2021

- ▶ Average plan review timelines
 - ▶ New Single-Family Home, Guest Home, and Major Addition (12-14 weeks)
 - ▶ Minor Addition (4-8 weeks)
 - ▶ Accessory/Recreational Structure (4-8 weeks)
 - ▶ Exterior Remodel (4-6 weeks)
 - ▶ Interior Remodel (2-4 weeks)

- ▶ Helpful Handouts
 - ▶ <http://cherryhillsvillage.com/356/Applications-and-Helpful-Handouts>



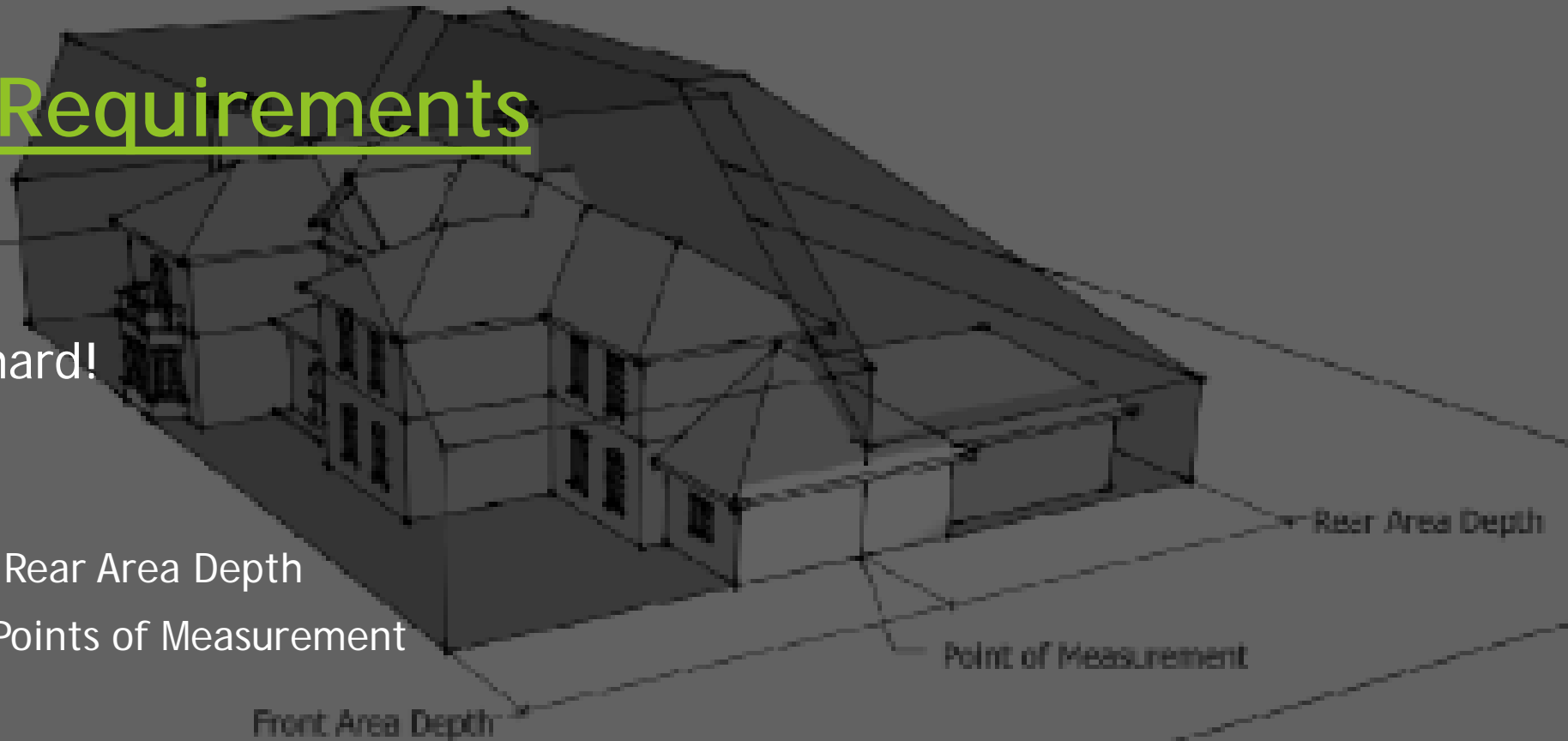
Zoning Code Updates

- ▶ Amendments Related to Keeping Animals
 - ▶ Recreational Structures in the O-1 Zone District
 - ▶ Tree Mitigation Requirements
 - ▶ Accessory/Recreational Structures in Residential Zone Districts
- 
- A network diagram consisting of several pushpins of varying heights and positions on a dark wooden surface. The pushpins are interconnected by thin, light-colored lines, creating a web-like structure. The background is a dark, textured surface, possibly wood, with a subtle pattern of light and dark areas.

Bulk Plane Requirements

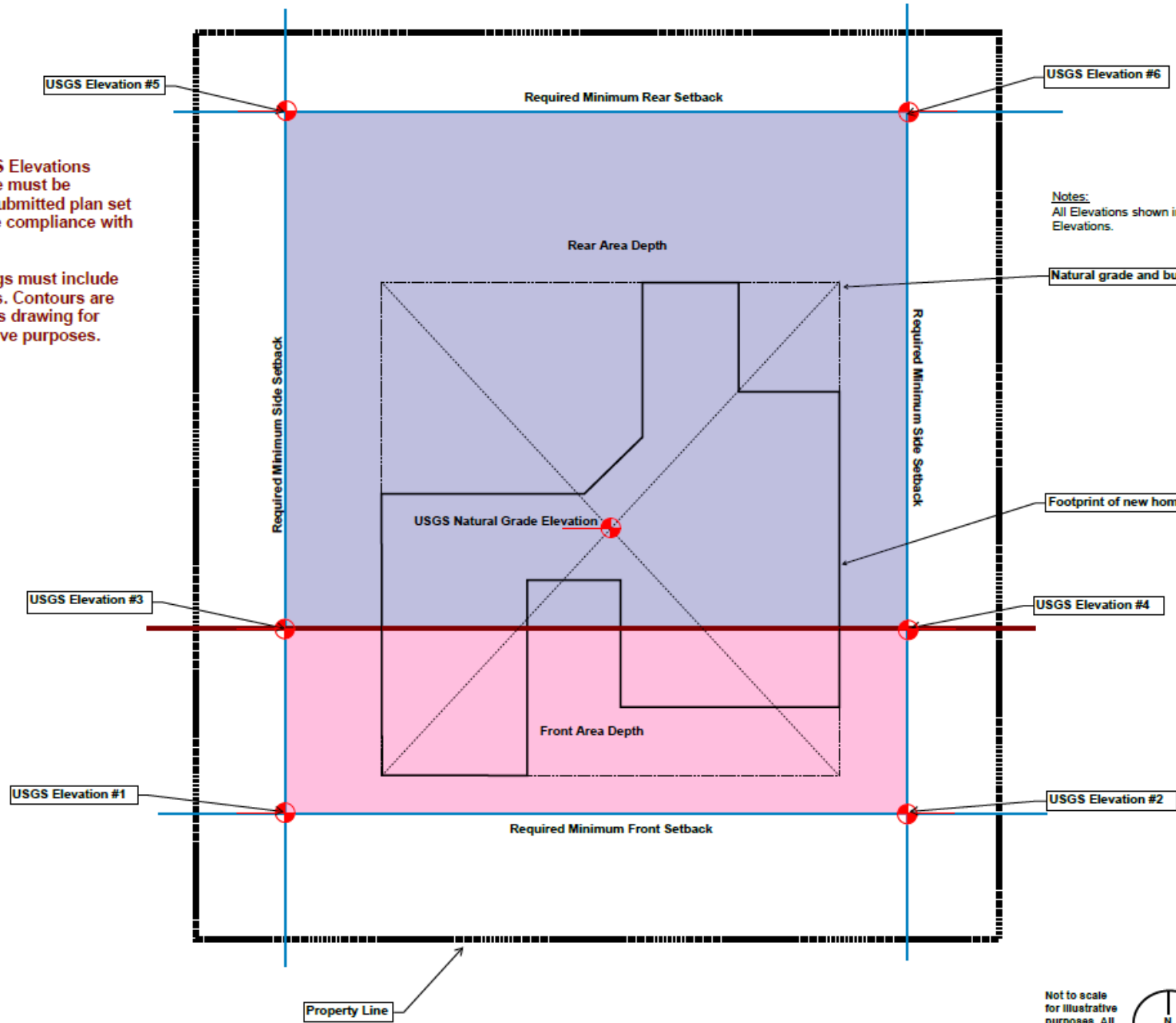
Bulk Plane can be hard!

- ▶ Maximum Height
- ▶ Front Area Depth vs Rear Area Depth
- ▶ Bulk Plane Starting Points of Measurement
- ▶ 3D imaging encouraged
- ▶ Bulk Plane Handout
 - ▶ <http://cherryhillsvillage.com/356/Applications-and-Helpful-Handouts>



*All seven (7) USGS Elevations shown on this page must be represented on a submitted plan set for staff to evaluate compliance with the bulk plane.

*Submitted drawings must include 1-foot contour lines. Contours are not included on this drawing for bulk plane illustrative purposes.



Notes:
All Elevations shown in this plan set are USGS Elevations.

Natural grade and building height per 16-9-10.


Footprint of new home.

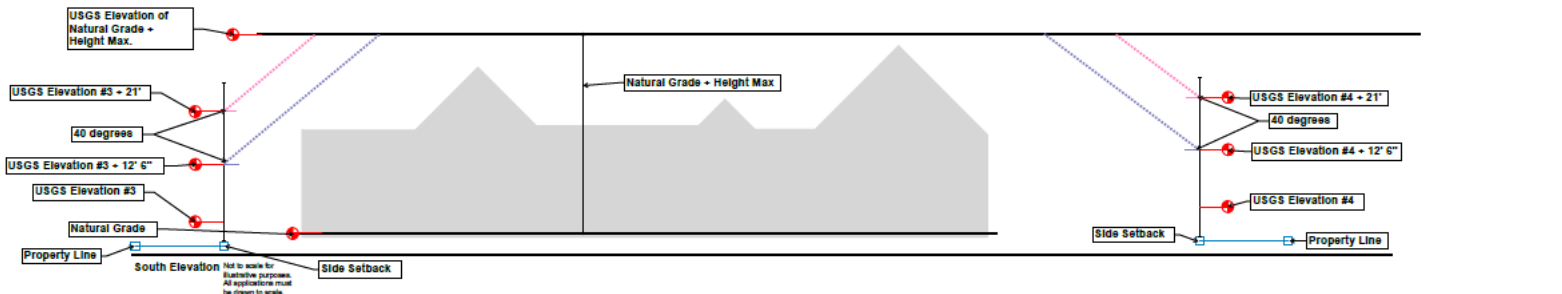
USGS Elevation #4

USGS Elevation #2

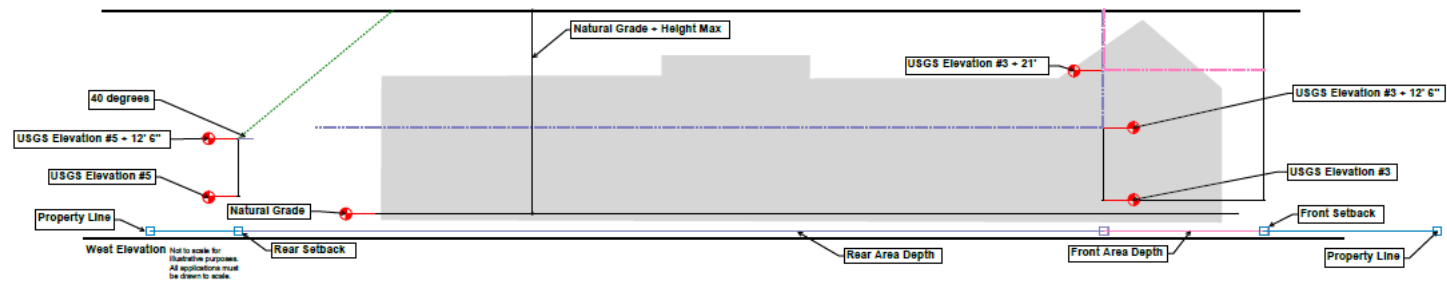
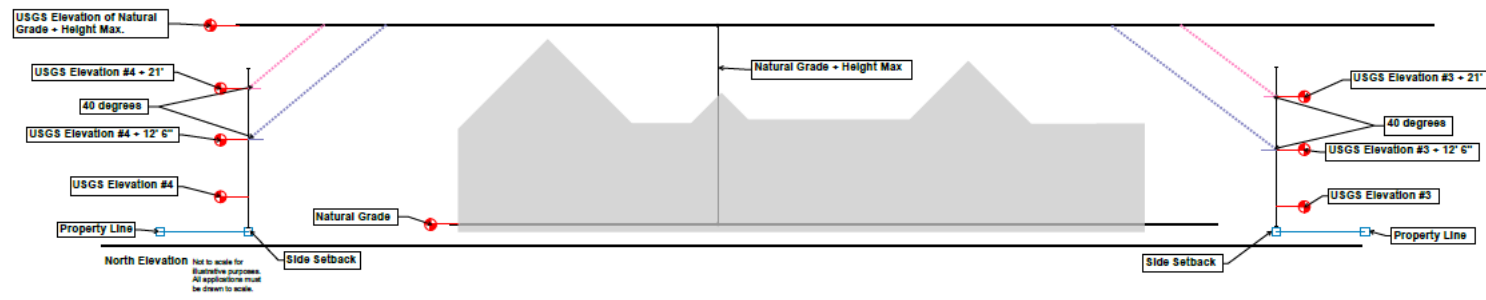
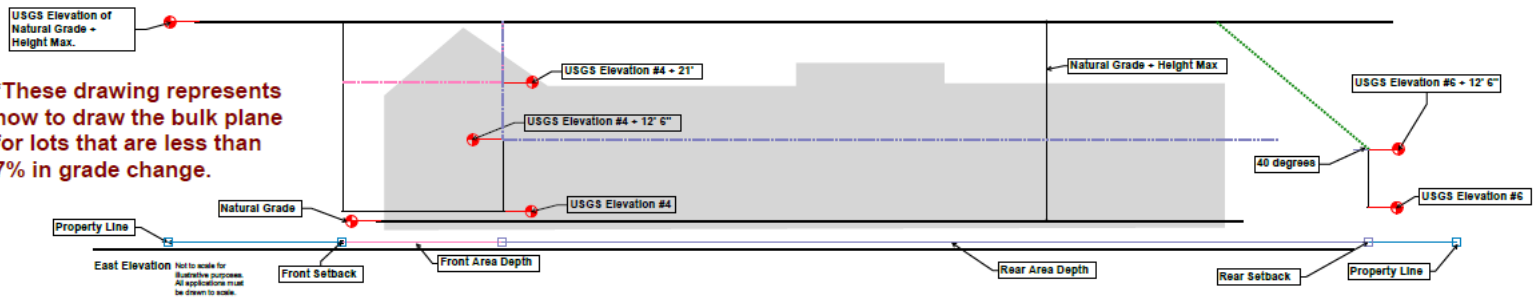
Property Line

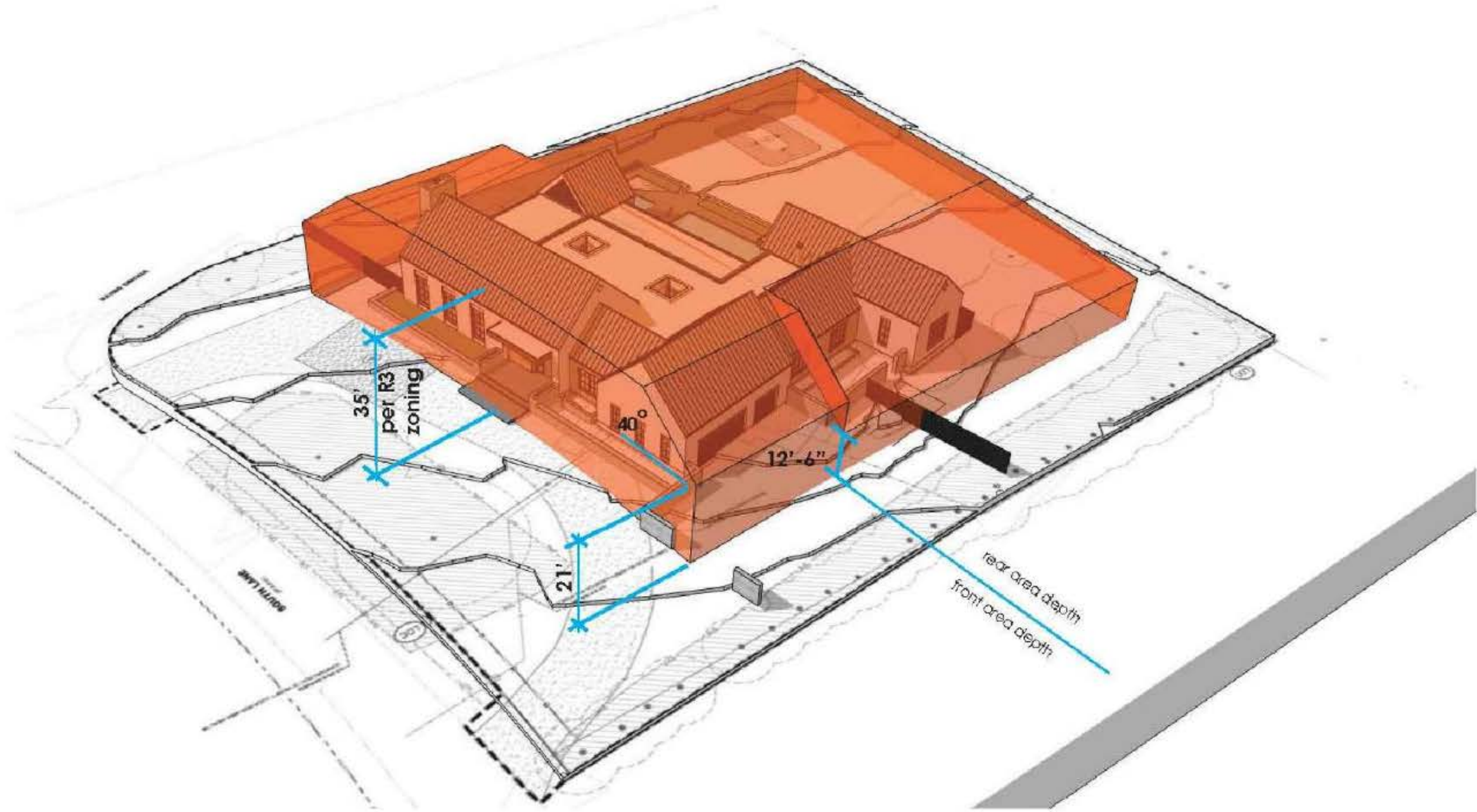
Not to scale for illustrative purposes. All applications must be drawn to scale.

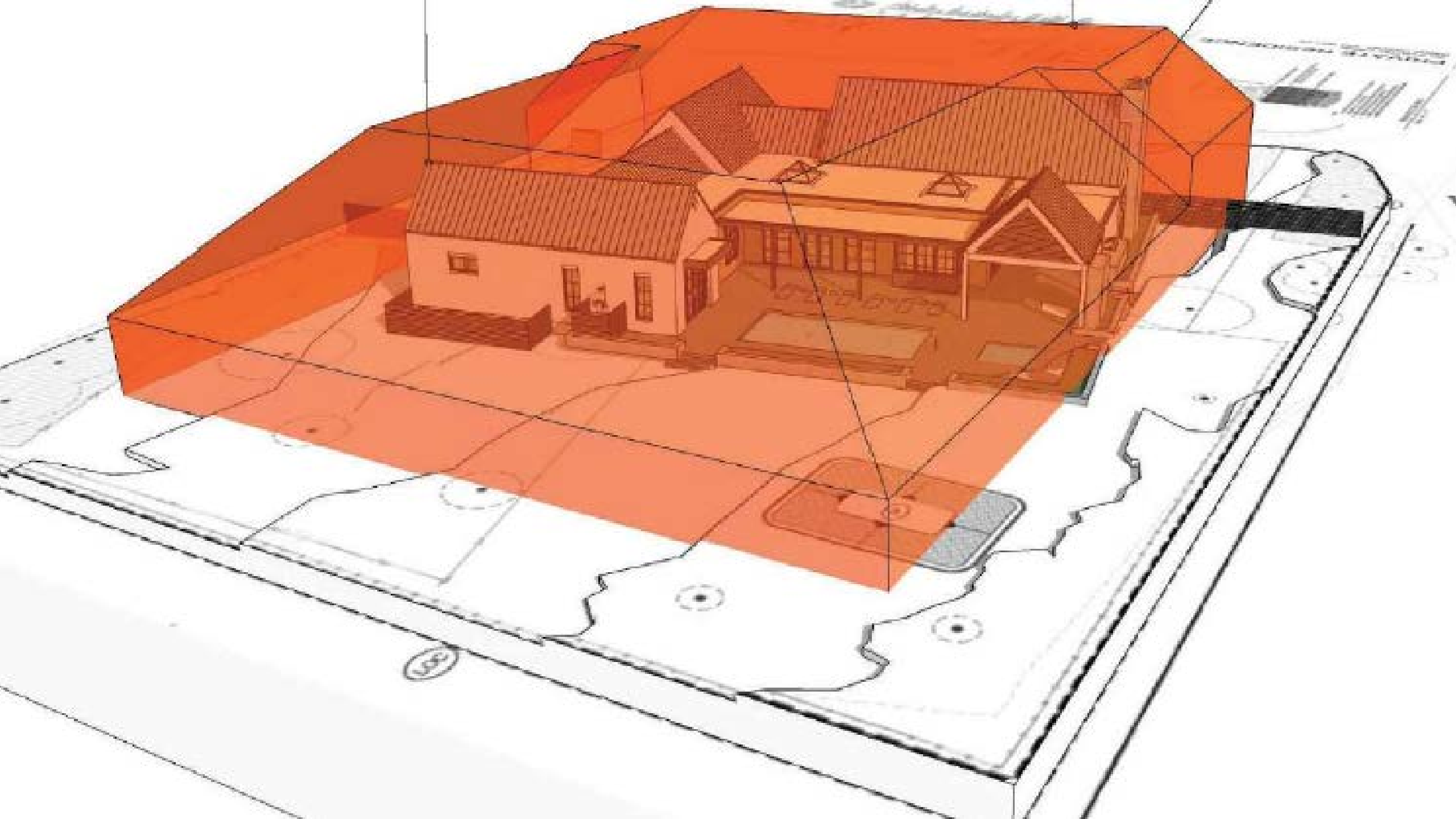




*These drawing represents how to draw the bulk plane for lots that are less than 7% in grade change.







Questions?