



Cherry Hills Village

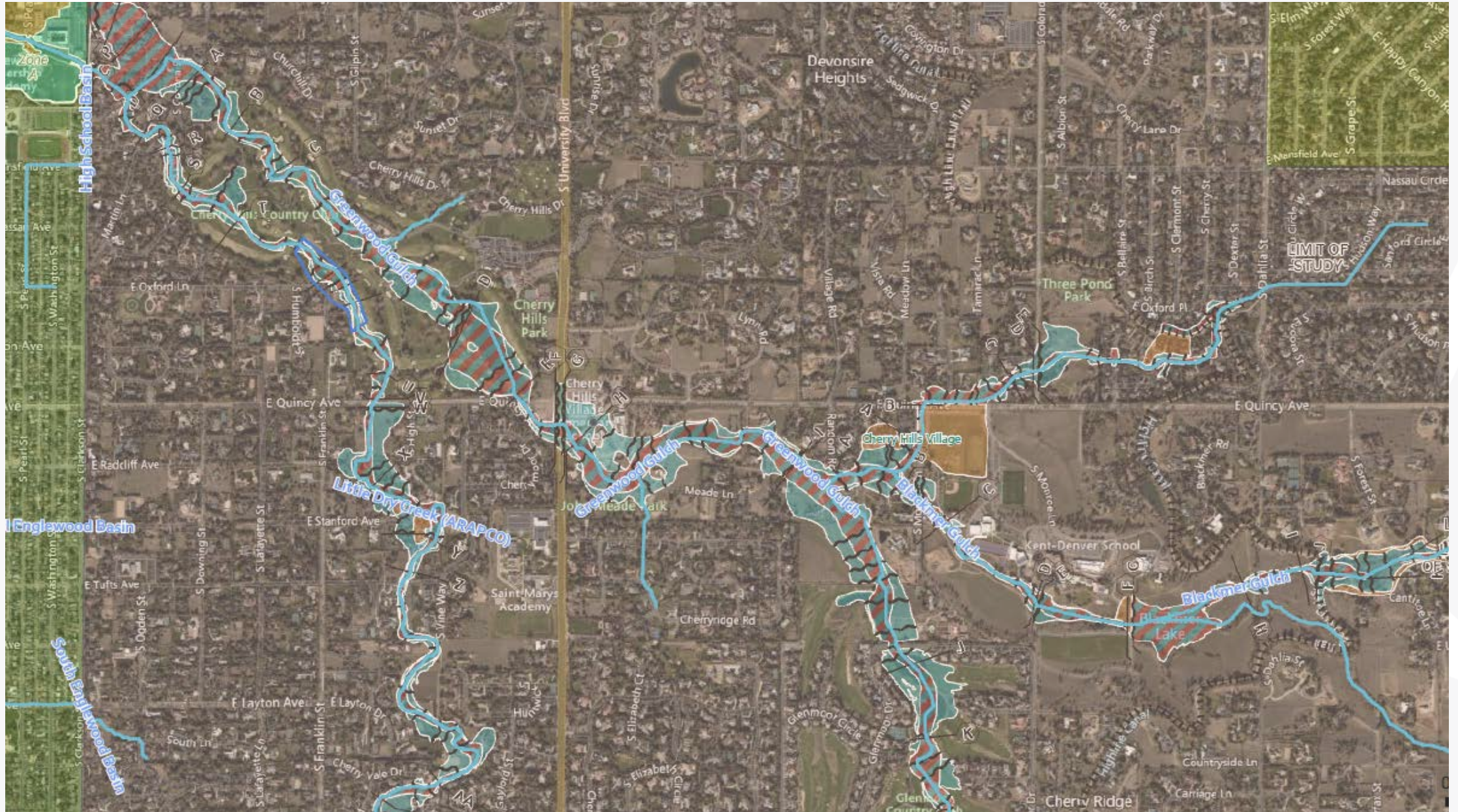
Contractor --- Meeting

Kimley»Horn

Agenda

1. Floodplain Management
2. Floodplain Development Process
3. Stormwater Requirements
4. Development Permit Checklists

Floodplain Management



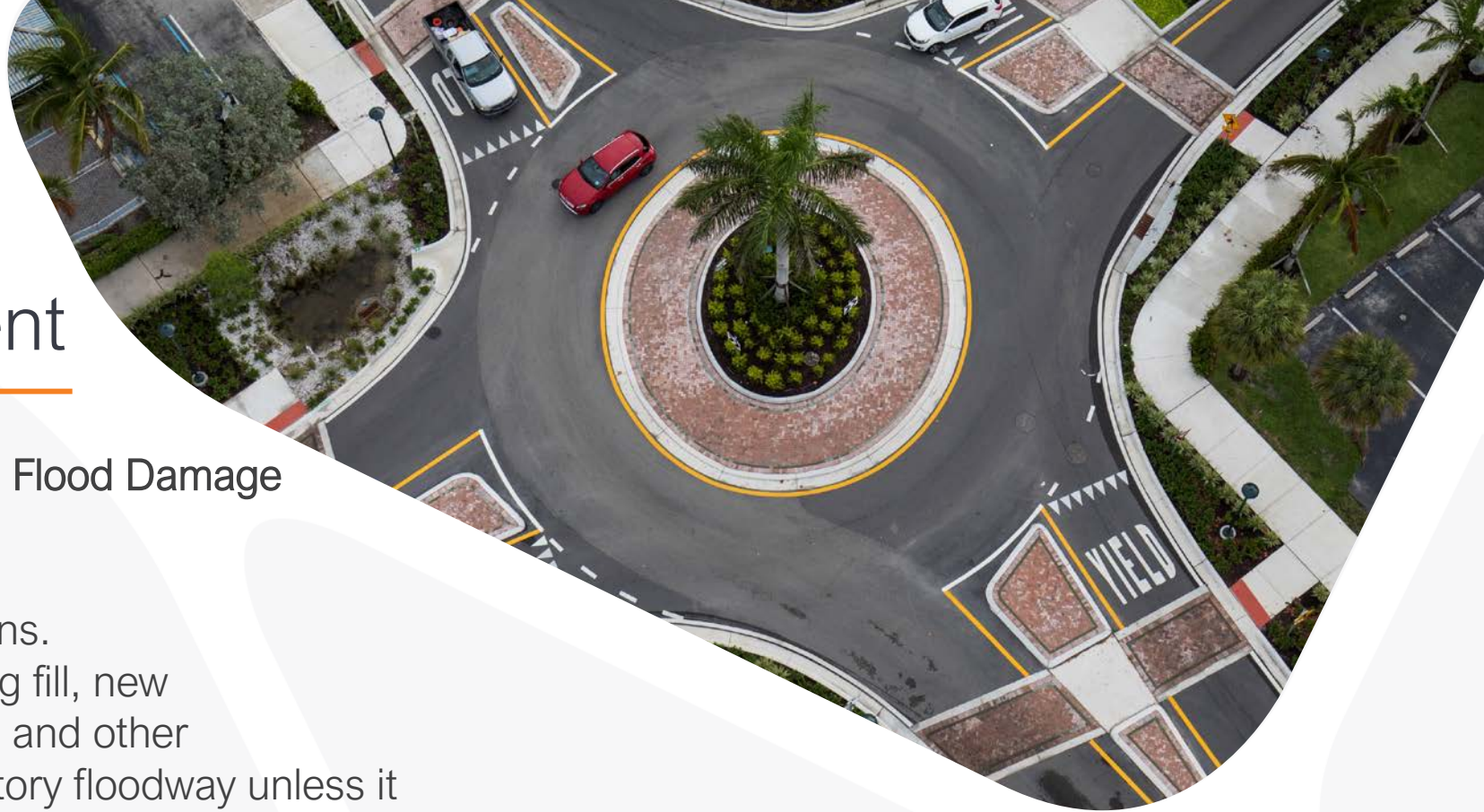
Floodplain Development

Article V.– Floodplain Management and Flood Damage Prevention

Sec. 16-5-240. –Floodways

(b) Encroachments Prohibited; Exceptions.

Encroachments are prohibited, including fill, new construction, substantial improvements and other development within the adopted regulatory floodway unless it has been demonstrated through hydrologic and hydraulic analyses performed by a licensed Colorado Professional Engineer and in accordance with standard engineering practice that the proposed encroachment would not result in any increase (requires a No-Rise Certification) in flood levels within the community during the occurrence of the base flood discharge



Floodplain Mapping

<https://msc.fema.gov/portal/home>

MHFD Mapping

<https://mhfd.maps.arcgis.com/apps/webappviewer/index.html?id=89dc2d1efe0644b8b103642cede30958>

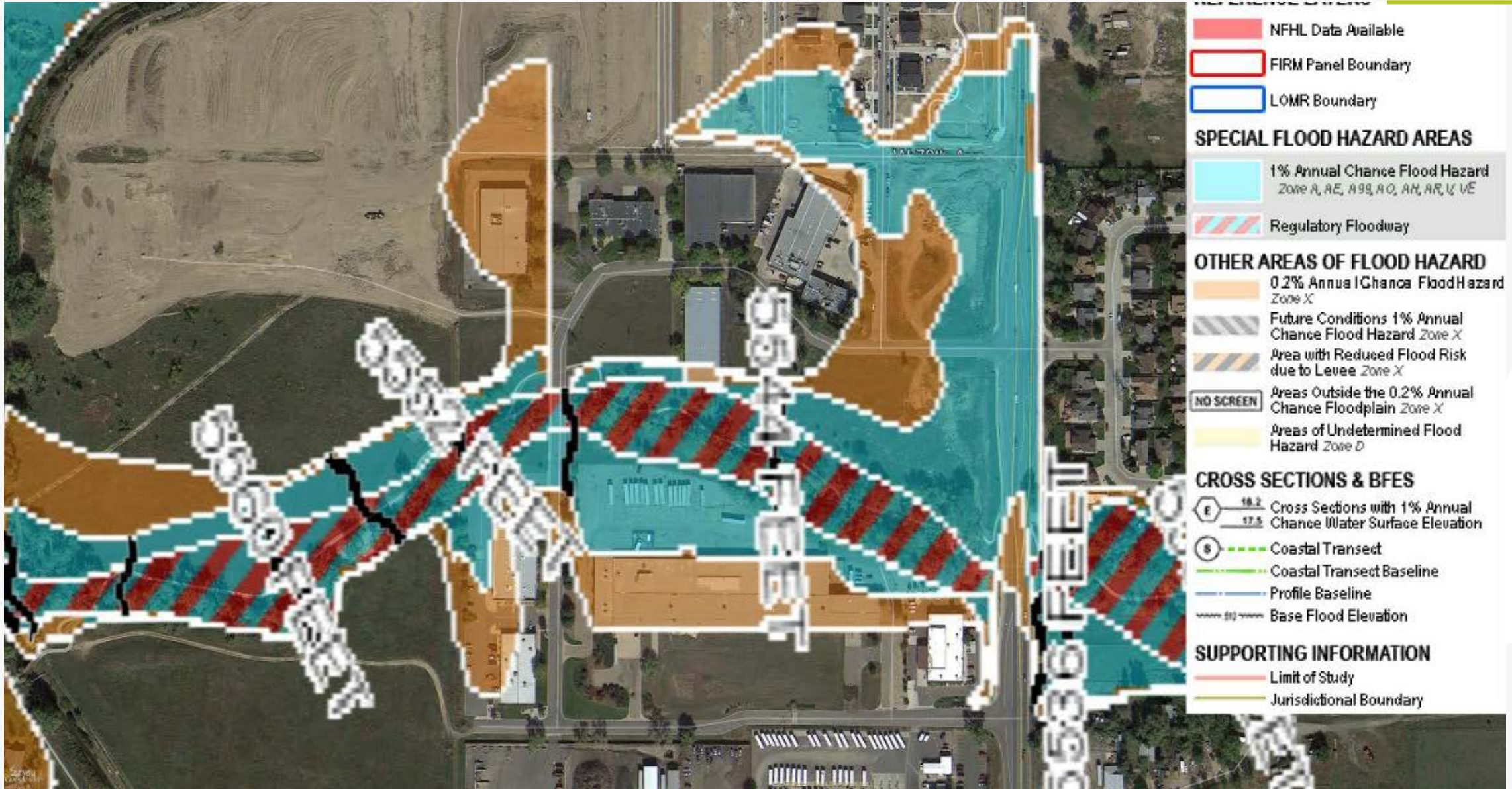
REQUIREMENTS

Floodplain Freeboard

AC SWMM Section 5.10.3

- A minimum clearance, or freeboard shall be provided between the 100-year base flood elevation (BFE) in the adjacent floodplain and structures and other applicable facilities which may be impacted by the floodplain.
- A minimum of 2-ft of freeboard shall be provided between the 100-year base flood elevation and the lowest finished floor elevation of all structures (this includes basements) within and adjacent to the SFHA. Please detail and show the BFE in the floodplain on the grading plan demonstrating the freeboard requirements are met.

Floodplain Maps



Floodplain Development Process

Article VII. – Development Review Process
Sec. 16-7-530. - Floodplain variances.

(a) Generally. Floodplain variances are required for development within areas of special flood hazards or areas covered by a LOMR-F, except for the limited development that is permissible by Floodplain Development Permit.



REQUIREMENTS

Stormwater Treatment

Arapahoe County Stormwater Management Manual (SWMM)

<https://www.arapahoegov.com/560/Stormwater-Management-Manual>

Water Quality

- For a project that has less than 1 acre of land disturbance and not a part of a common plan of development, water quality is not required.

100yr Detention

- Per AC SWMM Section 13.1.4 & 13.1.5 and CHV Municipal code Section 18-1-20 (8)6
- For site development made up of less than 2,500 square feet of additional impervious area, exemption to on-site detention requirements is permitted.
- Impervious square footage allowance is cumulative for the property, such that if there were previous expansion done it would count towards the 2,500 square footage count.
 - For example, if a house had an expansion in 2018 for 2,500 sq ft. and then requested a 2,600 sq ft. driveway or barn, they would exceed the total impervious allotment and would be required to have detention for the whole site.

REQUIREMENTS

Erosion Control

Arapahoe County GESC Manual

<https://www.arapahoegov.com/555/Grading-Erosion-and-Sediment-Control-Man>

Low Impact GESC

- Less than 1-acre disturbed area
- Adjacent to receiving water or potential for impact on adjacent properties
- Requirements:
 - Single GESC Plan

Standard GESC

- Greater than 1-acre disturbed area or
- Less than 1-acre disturbed area & activities within 100-feet of drainageway
- Requirements:
 - 3-phase GESC Plan (initial, interim and Final)
 - GESC Report

Submission Requirements

Civil Plan Requirements

<https://www.cherryhillsvillage.com/DocumentCenter/View/3476/Civil-Engineering-Plans-Checklist?bidId=>

Drainage Report

<https://www.cherryhillsvillage.com/DocumentCenter/View/3477/Phase-III-Drainage-Report-Checklist?bidId=>

Grading, Erosion and Sediment Control (GESC)

<https://www.arapahogov.com/555/Grading-Erosion-and-Sediment-Control-Man>



Contacts

City Engineer

Will Wilhelm, P.E. CFM, CPESC

Will.Wilhelm@kimley-horn.com

Stormwater Engineer

Shelby Madrid, PE

Shelby.Madrid@kimley-horn.com

The logo for Kimley»»Horn is displayed in white text on a dark red background. The word 'Kimley' is followed by three right-pointing chevrons (»») and the word 'Horn'. Below the logo, the tagline 'Expect More. Experience Better.' is written in a smaller white font. The background of the slide features large, abstract, rounded shapes in orange, red, green, and blue.

Expect More. Experience Better.

Thank You!